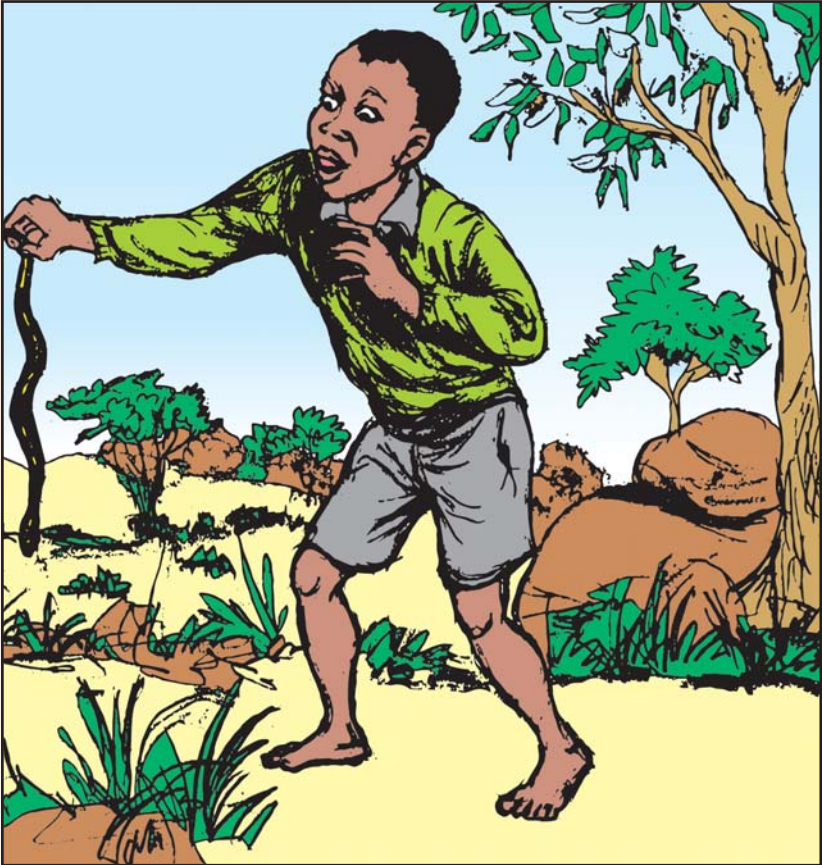


Nyoka ya Limbani



Lidanembewa naIgnatius T. Mabasa

Lidatulikiliwa naSekai Goche
Lidapepetewa naSora Chapwanya
Mufanikiso naJoel Chikware

Nyoka ya Limbani



Lidanembewa naIgnatius T. Mabasa

Lidatulikiliwa naSekai Goche

Lidapepetewa naSora Chapwanya

Mufanikiso naJoel Chikware



Copyright © 2017, Bhabhu Books. All rights reserved.

No part of this publication can be reproduced, stored in a retrieval system, or transmitted in any form or by any means — electronic, mechanical, photocopying, recording or otherwise — without prior permission of the Publisher.

This is a translation into Chikunda of the Shona story *Nyoka ya Gwinyai*, written by Ignatius T. Mabasa, translated by Sekai Goche, edited by Sora Chapwanya, illustrated by Joel Chikware.

Printing of this story is supported by a grant from the Living Tongues Institute for Endangered Languages. The Living Dictionary for Chikunda with photos and videos can be found at:
<https://livingdictionaries.app/chikunda>

Inango ntsiku Limbani akhayenda kushkola mazi akhakondwa lini. Kunja kukhajejela pomwe akhalibe ntsapato. Pomwe akhafamba nzayo zache zikhaponda pantsi pakhana mame ikhajejela.

Limbani akhafuna lini bzakuyenda kushkola nakuti kukhana mapasa mawili, Fura naPati. Mapasaya yakhambaputa Limbani yachimusunya nakumumenya. Peno Limbani wabwela nachakudya yakhamutengela nikumudyela.

Tsapano inango ntsiku Limbani adakumbuka





bzakupolowa naFura naPati mazi mano wawo adabwela nikuti kuna Limbani, “Ukandomenya ang’ono wangu basi, lekelatu kubwela kushkola nakuti ndinikupha.” Dzina lamano waFura naPati likhali Tomu pomwe akhali mulumbwana mukulu. Tomu akhambafamba nachisu chakutwa kwene-kwene mubolosa mwache.

Limbani akhadabadwa ali yekha munyumba mwaamayi napayi wache. Payi wache wadasaika, tsapano kunyumba kwache kukhana amayi wache basi. Amayi waLimbani wakanabasa lizinji bzakuti wakhalibe nthawi yakulewa-lewa naye wachitetekela bzikhamunesa pabodzi naalumbwana wakhamumenya kushkola. Amayi waLimbani wakhamuti, “Wakafuna kudzakudyela chakudya chako

wauze kuti wachiphsipila mata, wakafuna kukumenya thawa.”

Inango ntsiku, Fura naPati wadatengela Limbani chakudya chache, Limbani adawauza kuti waleke kuchidya nakuti wachiphsipila. Mazi Fura naPati wadatenga chakudya chaLimbani nikuchitaya wachimuseka. Pomwe Limbani akhayesa kuthawa kuti waleke kumumenya wakhamuthamangisa kufika wamuphata. Pinango pache wakhamupinga minyendo nikumugwesa, kumukhalila nikuyamba kumumenya.

Tsapano Limbani akhafuna lini kuyenda kushkola nakugopa Fura, Pati namano wawo Tomu akhana chisu. Limbani akhadatoleka kunyamula chakudya kushkola.

Akhandonyamula bhilo basi mubolosa mwache. Mabhuku yentse yakhasala kushkola.

Nathangwe lakugopa Fura naPati, Limbani akhakumbuka bzakusiya njila yakushkola nikufamba nan'thengo. Limbani akhakumbuka bzakuchoma achikwela miti nakunyang'ana mazayi yambalame.

Pomwe akhakumbuka bzakuleka kuyenda kushkola tenepo, Limbani adawona nyoka yakufa ikhali mumphepete mwanjila. Adayima nikuyinyang'ana. Pamwepo adati, “Nyokayi ingadakhala kuti ilibe kufa, ndingadaiputa ichindiluma ndife bzangu.” Mazi panthawi ibodziyo adakumbuka inango nzelu nikuyamba kusekelela.

Limbani adaphata muchila wanyoka yakufa ile nikuyiyikha mukati mwajuzi lache. Ikhojajela kuti je- je-



je nikuchitambo kuti Limbani abve kujejela. Limbani adayetsemula mazi alibe kuchosa nyoka ile mujuzi mwache. Adayikha juzi mukati mwakabudula kuti nyoka ileke kugwa nikuyenda kushkola.

Limbani akhadakumbuka bzakuseenzesa nyoka yakufa ile kugophsa Fura naPati wakayamba kumubonelesa. Akhafuna kudzai thusila kuna Fura naPati kuwagophsambo kuti wathawe. Chifundo chache chikhali chakuti awiliwa waleke

kudzamubonelesa pomwe. Munzelo zache, Limbani akhati,
“Nyokayi iniluma lini munthu nakuti idafa.”

Tsapano Limbani adayenda kushkola nanyoka ile ili
mujuzi. Pomwe adafika kushkola, anzache wadayamba
kumuseka kuti akhadayikha juzi mukati mwakabudula. Limbani
alibe kubzitetekela mazi adandopita munyumba yomwe



anipunzila nikukhala pambuto yache ninga ntsiku zentse.

Muphunzisi waLimbani, Sinyala Nkhumba adapita
nikuyamba kuphunzisa. Phunzo yakuyamba yaChizungu
idamala. Sinyala Nkhumba akhafuna kuyamba kuphunzisa
samu pomwe padayamba kuchita kaliki-liko.

Lim bani akhadayimila kuti Sinyala Nkhumba achoke wayambe kudya. Akhafunambo kudzawona peno Fura naPati wanidzaputa anango, kuwagophsa pabodzi nakuwadyela chakudya chawo. Pati naFura wakhati wakamangaliliwi kuna Sinyala Nkhumba naanango wana kuti wankuwaputa wakhadzawamenya pakuyenda kunyumba. Mazi wana azinji, maka-maka Limbani, wakhandokhala wachigopa tulumbwana tuwilitu.

Pomwe Sinyala Nkhumba akhali pakati pakuphunzisa, nthawi yakudya yawambo pafupi nakukwana, Limbani adabva chinthu chichifamba mujuzi mwache nikuyamba kuchita mantha. Nyoka yile yomwe akhakumbuka kuti njakufa ikhalibe, mazi ikhadaphatiwa namphopo ndipopa ikhadachita ninga yafa. Nyoka idabva kuthumidwa ili mujuzi laLimbani tsapano ikhanyang'ana kwakuchoka nako.

Nyoka ile pomwe idayamba kufamba mujuzi laLimbani, adadzidzimuka nikunyamuka kuti nyamu pomwe akhadakhala. Pamwepo, Sinyala Nkhumba adati, "Limbani khala pantsi, nthawi yakudya ikanati kukwana."

Mazi Limbani alibe kukhala pantsi. Adayamba kubzina-bzina adayima pambuto ibodzi achipumila padzulu achilatiza mantha. Nkhope yache ikhadatosanduka namantha.

Sinyala Nkhumba adati, "Limbani, kodi unku dwala? Kodi unku funa kuyenda kuchimbuzi?"

Limbani adati, "Nee."

"Tsapano nichiyani chanesa?" Sinyala Nkhumba adamubvunza.

Limbani adandoyashamula mazi palibe chomwe adalewa. Adandolata pamimba pache mujuzi.

Sinyala Nkhumba adasusumwa nabzomwe bzikhachitiwa naLimbani. Adakumbuka kuti pinango wadwala namatenda yakuyipa.

Pomwe bzentsenebzi bzikhachitika, anango wana wadayamba kuseka, wadanyamuka nikuyima pafupi naLimbani wachimuseka.

Sinyala Nkhumba adati kuwana, “Khalani pantsi!” Mazi palibe womwe adamutetekela nakuti wakhachita zungo.

Sinyala Nkhumba adadzathamanga kuofisi yamukulu washkola kukamangali bzikhachitiwa naLimbani.

Panthawe pomwe Sinyala Nkhumba adachoka, Fura naPati wadafendela kukhana Limbani nikuyamba kumugwinya. Fura adaphata juzi laLimbani nikumudhontsela pafupi naye, “Nandi Limbani unkufuna kuphanza? Kodi kunyumba kwanu mudadya ntsima nanyama yambwaya? Nitangwe lanyi unkutatamula nkhope ninga thelele tenepo? Peno unkufuna kusanza, choka panja.”

Pomwe Fura adalewa mafalaya winango wana wadaseka nakuti wakhakumbuka kuti alewa mafala yakusekesa. Pamwepo Pati adaphata juzi laLimbani nikumudhontsa, nyoka ile idagwa kuchoka mujuzi laLimbani nikugwela pantsi kuti phu-u. Pomwe idagwa, nyoka ile idayamba kukwela pamwendo waPati. Pati adayamba kulilla achigwela pantsi nikukomoka. Pomwe Fura naanango wana wadawona nyoka ile, wadayamba kugwinyana



wachithawa. Anango wadachoka napamazhanelo, anango napamusuwo.

Pomwe mukulu washkola adabwela ali pabodzi naSinyala Nkhumba naanango aphunzisi, wadawona wanango wana wentse wali panja kusala kwaPati womwe akhadakomoka. Wanawa walibe kupwetekeka kwene-kwene kusala kwawale womwe wadapwetekewa namagalafa.

Nyoka yile idadzaphatiwa nawanichita nabzakukonkhobzewa kwanyama zan'thengo waNational Parks. Wambakonkhobza nyama zan'thengo ninga, mphondolo, nzou, mvuu, nabzinango. Pati adadzalamuka achililila kufuna kuyenda kunyumba. Kuyebwa kuti niye ule akhabonelesa anango, akhadapusa tsapano.

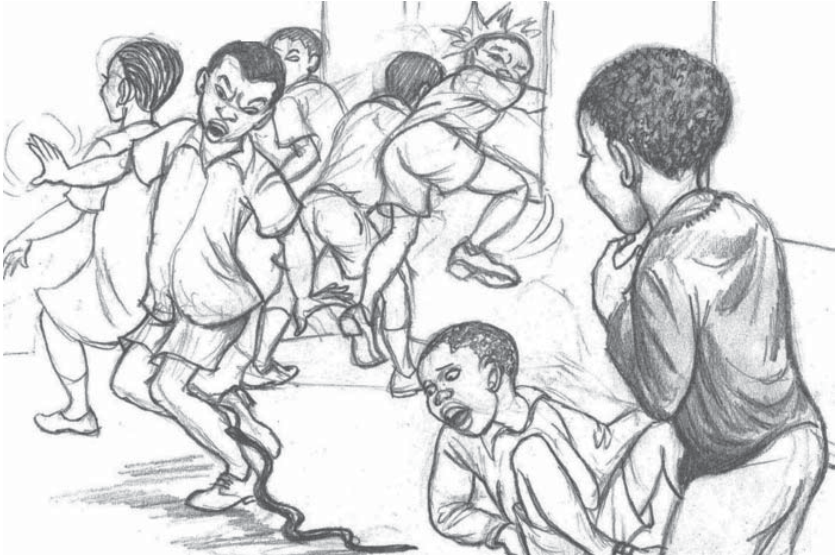
Limbari adawuziwa kuti akachemele amayi wache



akanati kuthamangisiwa shkola nathangwe lazungo yomwe akhadachitisa nanyoka yache.

Amayi waLimbani wadadzafika kuofisi yamukulu washkola. Limbani adabvunziwa kuti nyoka akhadayiwona kuponi. Adalongosola kumenyewa nakudyelewa chakudya chache komwe akhachitiwa naFura naPati, nakugophsewa nachisu komwe akhachitiwa namano wawo. Adalongosolambo mantha yomwe akhachita kubwela kushkola bzidadzachita kuti akumbuke kuseenzesa nyoka yomwe adawona achikumbuka kuti idafa.

Amayi wache wadayamba kulila. Mukulu washkola adadzanyamuka nikuti kuna Limbani, “wachita bwino



Limbani, tinkuthamangisa lini shkola tsapano nakuti bzomwe wachitabzi nithangwe lakufuna kubzikonkhobzambo. Chipani chakunyang'anisa nabzaphunzo chinikondwa lini nawana wanigophsa anzawo, kuwabonelesa, kuwamenya, kuwadyela chakudya chawo nabzentse bzakuyipa bzinichitiliwa anango wana. Timbafuna lini wana wanifamba nabzisu nabzvinango bzombo bzakuseenzesa kupweteka anzawo. Peno wankuthandiza lini kunyumba, uza muphunzisi wako kana kubwela komwe ndili ndikuthandize nakuti kunyamala uchigophsewa nakubonelesewa kunimala lini kubonelesewako. Kodi wabva Limbani?"

"Yinde ndabva," Limbani adatawila achilatiza kukondwa. Mukulu washkola adachemela Tomu kuofisi kwache. Adanyang'ana mubolosa mwaTomu nikuwona muna chisu,

kobili nambanje. Tomu adathamangisiwa shkola. Limbani adadzayenda kunyumba naamayi wache achikondwa. Fura naPati walibe kudzamubonelesa pomwe.

Winango wana wadayamba kulewa magunkha yakuti, Limbani akhadapasiwa nyokayi naamayi wache ndipopa wadabwela kushkola kuti mukulu washkola awabwezele. Winango wana wakhati, amayi waLimbani wakhana zinango nyoka zizinji kunyumba kwawo. Napo mafala yentseneya yakhali yakunama, bzimwebzi bzidachita kuti anango wana wagope kuputa Limbani.

Wachipani chakunyang'anisa nabzakukonkhobzewa kwanyama zan'thengo wadadzabwelela kudzaphunzisa wana nabzanyoka. Limbani adadzaphunza kuti nyoka zikajejelewa kwene-kwene zinichita ninga zafa. Nibzomwe bzidachita kuti Limbani akumbuke kuti nyoka ile ikhadafa. Mazi pomwe idathumidwa idakumbuka kuchoka kuti iyende n'thengo momwe inikhala.

Kulewalewelana

1. Nibziponi bzinango bzakuyipa bzimbachitiwa nawana kwaanzawo?
2. Nichiyani chomwe udachitiwa naanango wana chidachita kuti usaye kufuna kuyenda kushkola?
3. Ashamwali wabwino wanichita tani?
4. Abeleki naapunzisi wangachite tani kuthandiza wana wanibonelesewa naanango wana washkola?
5. Ungadakhala ndiwe Limbani ungadachita tani kuwanthu waninga Fura naPati?

Mbvunzo

1. Wakondwela chiyani munkhaniyi?
2. Nichiyani chilibe kukukondwelesa munkhaniyi?
3. Nemba mafala mawili yanilongosola machitikidwe yabzinthu munkhaniyi?
4. Mpfiti nimunthu anichita tani?
5. Dzina lamwana wanyoka nichiyani?
6. Nemba madzina matatu yanyoka zomwe unidziwa.
7. Mame iniwoneka nthawi iponi?
8. Zinango nyama zan'thengo zalewedwa munkhaniyi niziponi?
9. Dzina linichemelewa kumukazi womwe adafelewa namwamuna ninga amayi waLim bani ndakuti chiyani?
10. Kodi mwana adasaikiliwa namubeleki ninga Lim bani anichemelewa kuti chiyani?

Pomwe akhakumbuka bzakuleka kuyenda kushkola tenepo,
Limbani adawona nyoka yakufa ikhali mumphepete mwanjila.
Adayima nikuyinyang'ana. Pamwepo adati, "Nyokayi ingadakhala
kuti ilibe kufa, ndingadaiputa ichindiluma ndife bzangu." Mazi
panthawi ibodziyo adakumbuka inango nzelu nikuyamba
kusekelela.

Limbani adaphata muchila wanyoka yakufa ile nikuyiyikha mukati
mwajuzi lache. Ikhajejela kuti je-je-je nikuchitambo kuti Limbani
abve kujejela. Limbani adayetsemula mazi alibe kuchosa nyoka ile
mujuzi mwache. Adayikha juzi mukati mwakabudula kuti nyoka ileke
kugwa nikuyenda kushkola.



Bhabhu Books - Celebrating Hunhu/Ubuntu
Wisdom does not always Speak in English